

EVE

RESIDENCES

THE GOLDEN MILE

MARINE PARADE, GOLD COAST



EVE

RESIDENCES

EVE RESIDENCES

AGENTS PRE-RELEASE MEMORANDUM

PLANS SUBJECT TO CHANGE WITHOUT NOTICE

ILLUSTRATIONS AND IMAGES ARE ARTISTIC IMPRESSIONS



25 LEVELS OF LUXURY WATERFRONT APARTMENTS

EVE RESIDENCES - A CELEBRATION OF A SPECTACULAR OUTLOOK

A design masterpiece by world renowned architects DBI International, marking the gateway to Marine Parade's Golden Mile.

Eve will set a new standard with 25 levels of luxury living and is destined to become the most sought-after residential property for discerning buyers wanting to live in this unique waterfront location.



THE BROADWATER, AN AQUATIC PARADISE FROM SUNRISE TO EVENING.



WELCOME TO 180 MARINE PARADE, THE GOLDEN MILE.

A tightly held location that enjoys some of the most spectacular vistas the Gold Coast has to offer.

From sunrise to evening, there is an ever-changing tapestry of colour and aquatic activities, with the ebb and flow of the tide revealing a sanctuary of sand banks sheltered by North Stradbroke Island.

Wet a line, paddle a canoe, stand-up paddle, swim from one of the sandy coves or just relax in a deck chair and let the theatre of the marine lifestyle pass by.





VIEW FROM LEVEL 9 - SUNRISE EAST.





VIEW FROM LEVEL 12 - EAST.

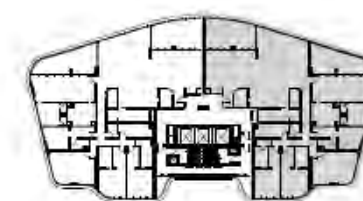


KEY PLAN





VIEW FROM LEVEL 25 - EVENING.



KEY PLAN



COASTAL FLUID, WARM NATURAL

“This is truly a unique part of the Gold Coast’s Broadwater, with soft sand bars forming and shifting in tune to the tides.

Our design team was inspired by the serene soft edges of this ever-changing seascape, and adopted a soft line approach in planning and designing the apartments and public spaces of Eve.

The building resonates with rounded edges and the journey to your apartment is enhanced with soft line elements, columns, screens and soft edged joinery.

Whilst inside a palette of materials centred around natural textures, soft-toned oaks and finely grained stones is calm and restful.”

Anna Goh

Associate Director/Interior design

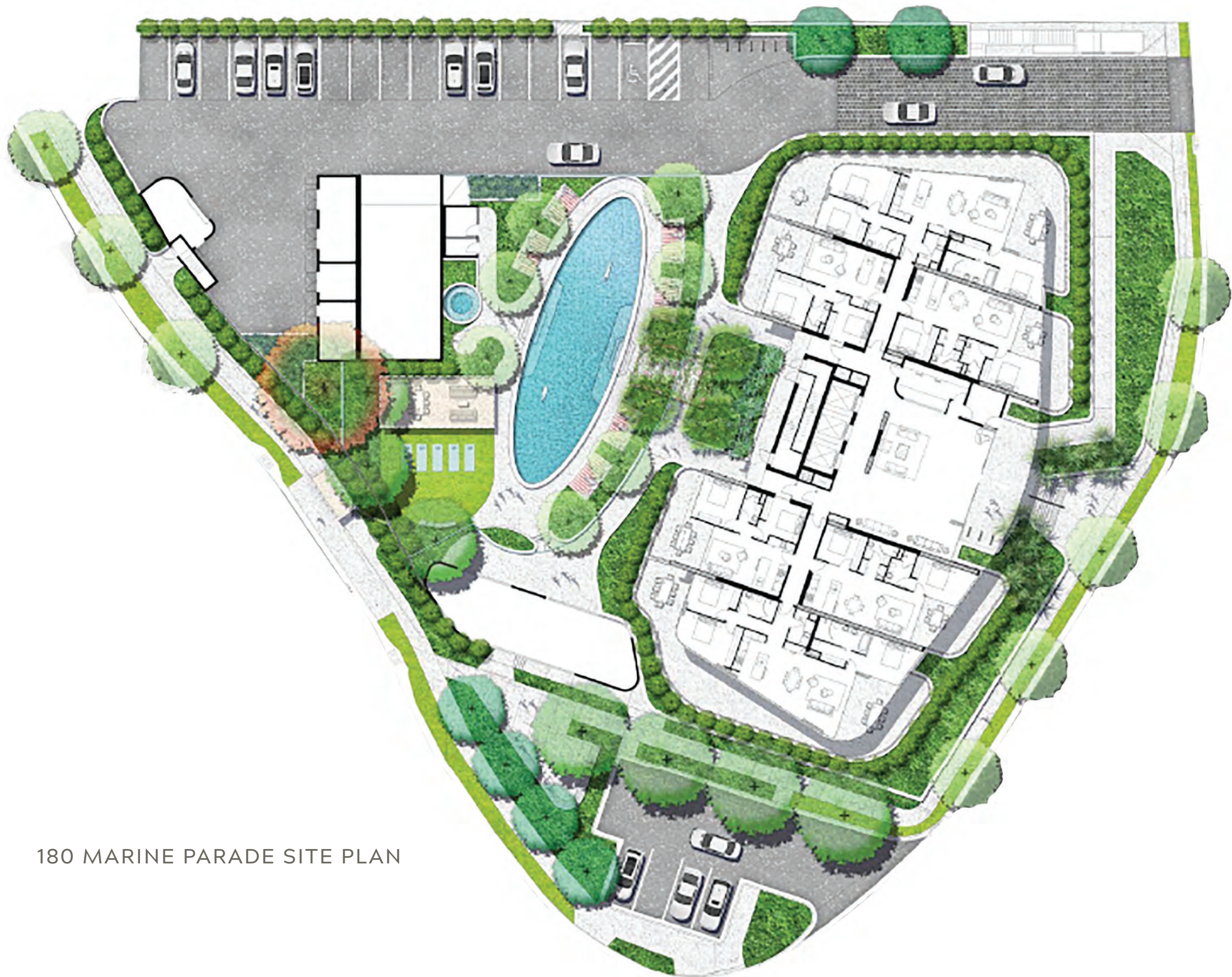




TYPE C KITCHEN AND DINING





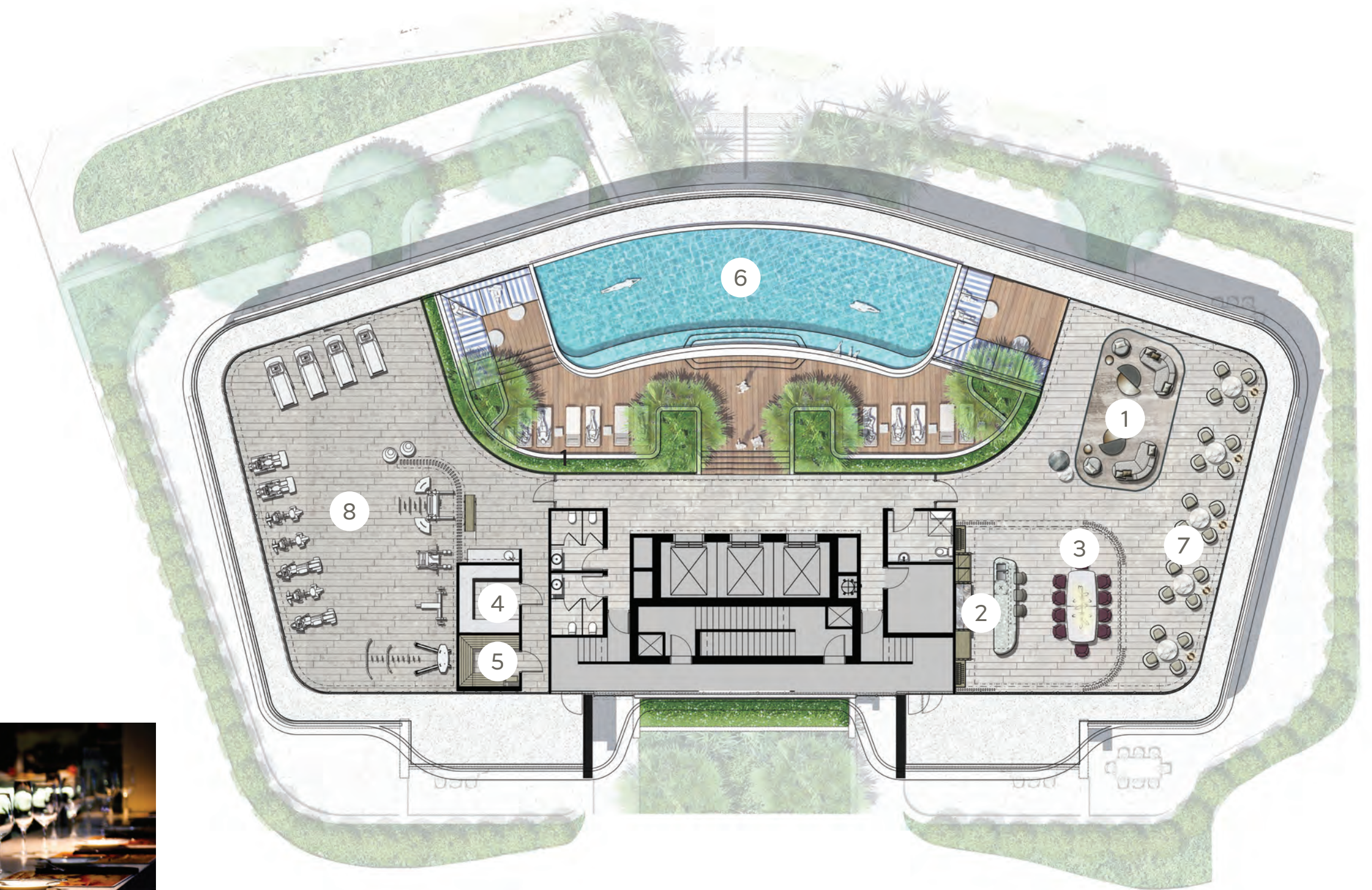


180 MARINE PARADE SITE PLAN



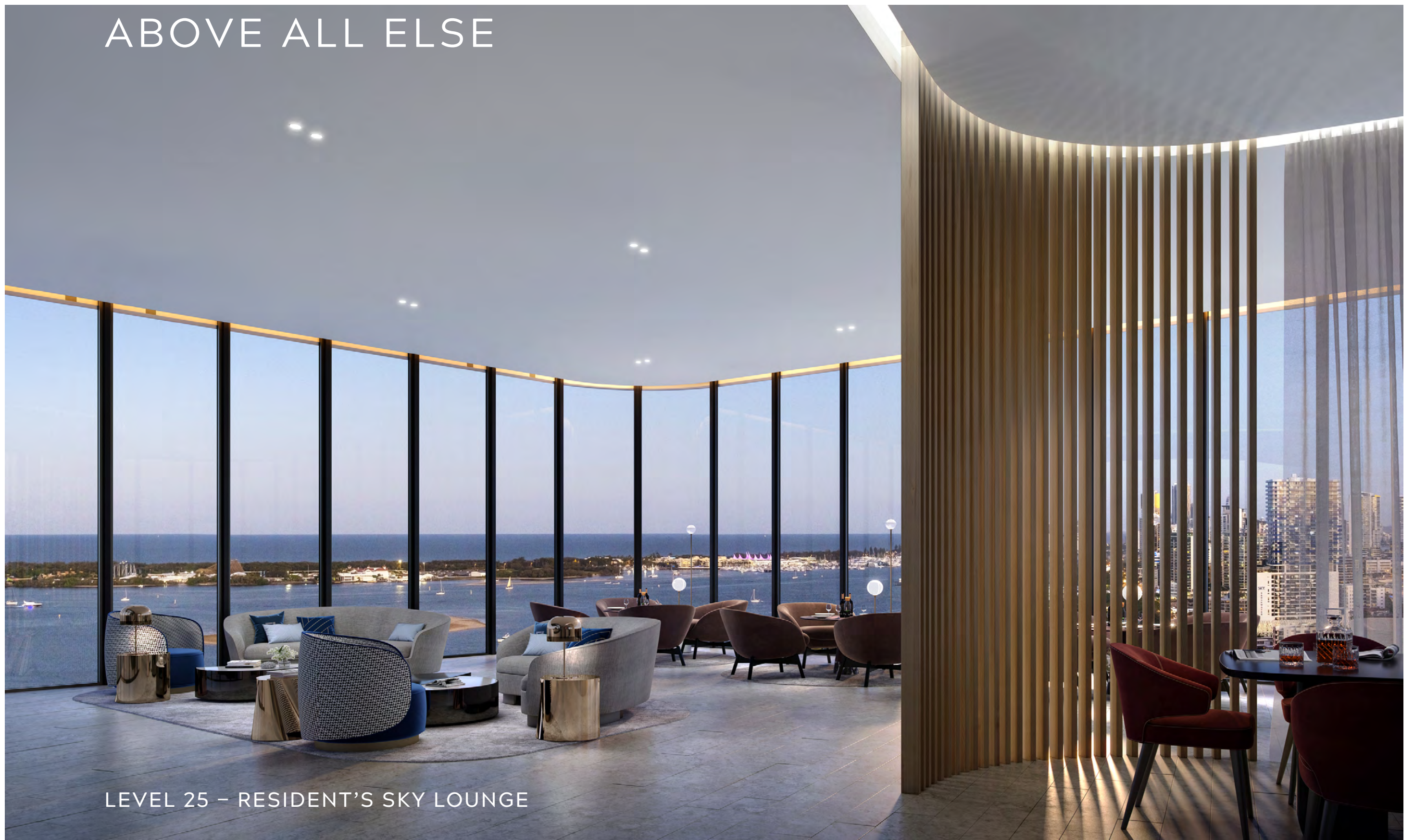
LEGEND

1. Residents club lounge
2. Show kitchen
3. Private dining room
4. Steam room
5. Sauna
6. Heated infinity pool
7. Relaxed seating areas
8. Gymnasium



ABOVE ALL ELSE

LEVEL 25 – RESIDENT'S SKY LOUNGE





The background of the entire page is composed of numerous thin, light gray wavy lines that flow from the top left towards the bottom right, creating a sense of movement and depth.

EVE

RESIDENCES

FLOOR PLANS

TYPICAL PLAN

TYPE C

LEVELS 1-19

3 BEDROOMS

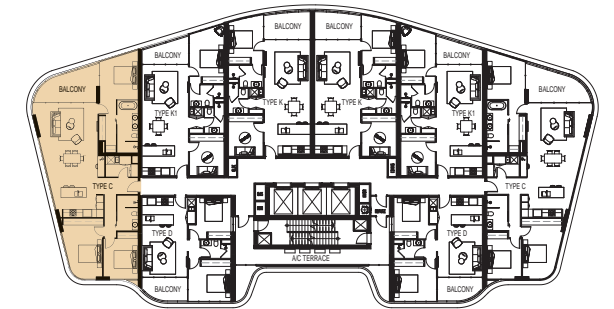
2 BATHROOMS

2 CARPARKS

Indoor living
135m²

Outdoor living
15m²

Total living
150m²



DBI DESIGN INTERNATIONAL AWARD WINNING ARCHITECT

CREATE > EXCEPTIONAL

41 years Architecture, Master Planning, & Urban Design

With success stories all over the globe we work in harmony with like-minded partners who are passionate in making meaningful statements of structural impact for society to embrace and enjoy.



THE PROJECT TEAM

INNOVATIVE AWARD-WINNING BUILDER &
COMMUNITY CREATORS

- Founded in 2004
- 115 Staff
- 19 Urban community projects
- 3,500 lots developed
- \$1.5B total value



Ron Bakir
CEO



Mark Jewell
Development
Executive



David McMahon
COO



Wayne Jewell
Development
Manager

Homecorp®







EVE
RESIDENCES

sales@everesidences.com.au

www.everesidences.com.au

Phone Deborah Provost - 0408 652 963



Homecorp®